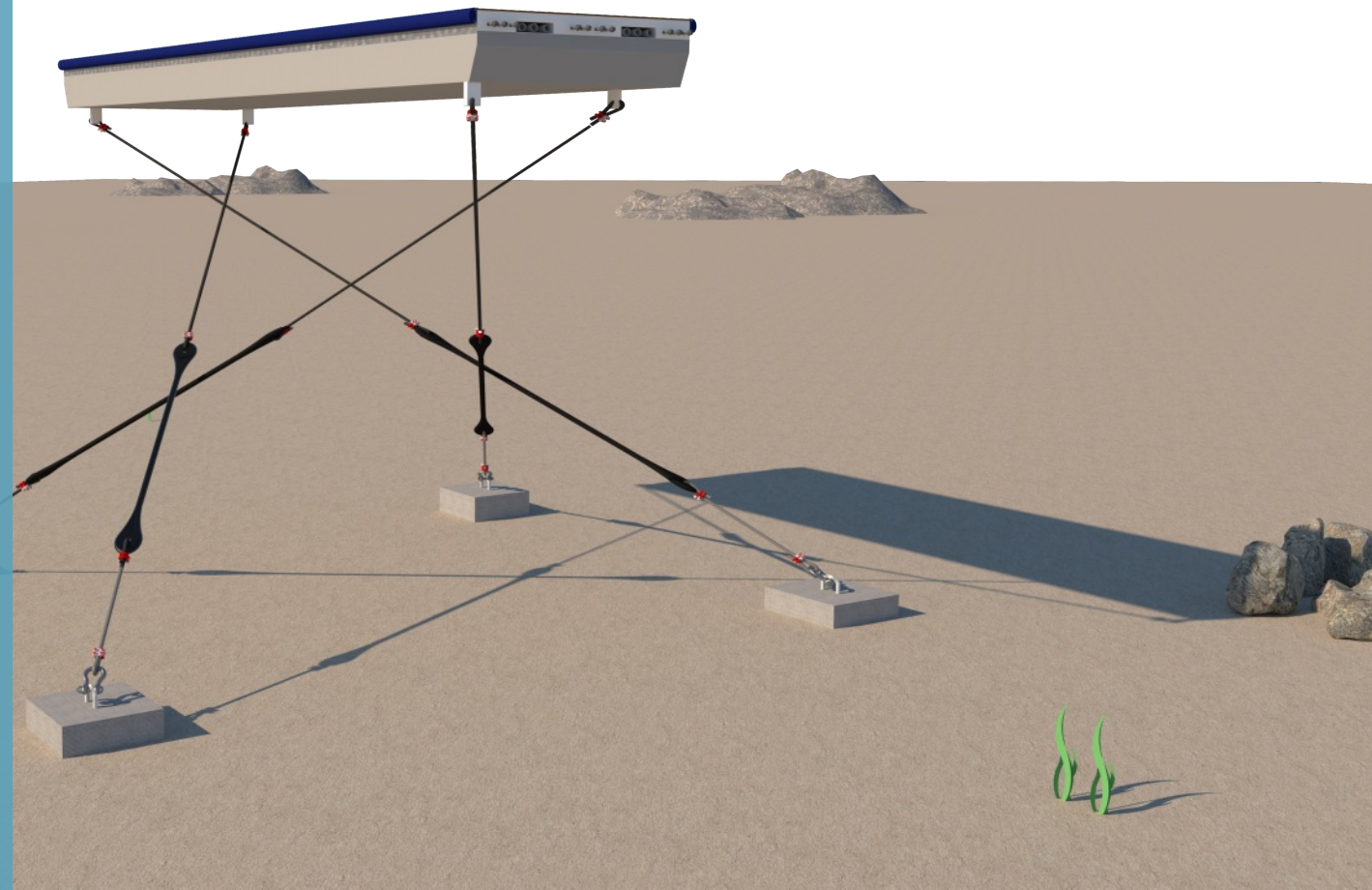


ELASTIC MOORING SOLUTION FOR ANY FLOATING APPLICATION

- INNOVATIVE
- RELIABLE
- ENVIRONMENTAL FRIENDLY



FLEXLINE

Made from high tenacity mixed rubber. A competitive alternative to Nylon, PU and Polypropylene.

SPACE SAVING

Flexline is used regularly in mooring areas to minimize swing circles. When applied to any floating structure, reduces the area required to anchor it.

NO MAINTENANCE REQUIRED

made of 100% non-corrosive materials

EASY TO TRANSPORT & INSTALL

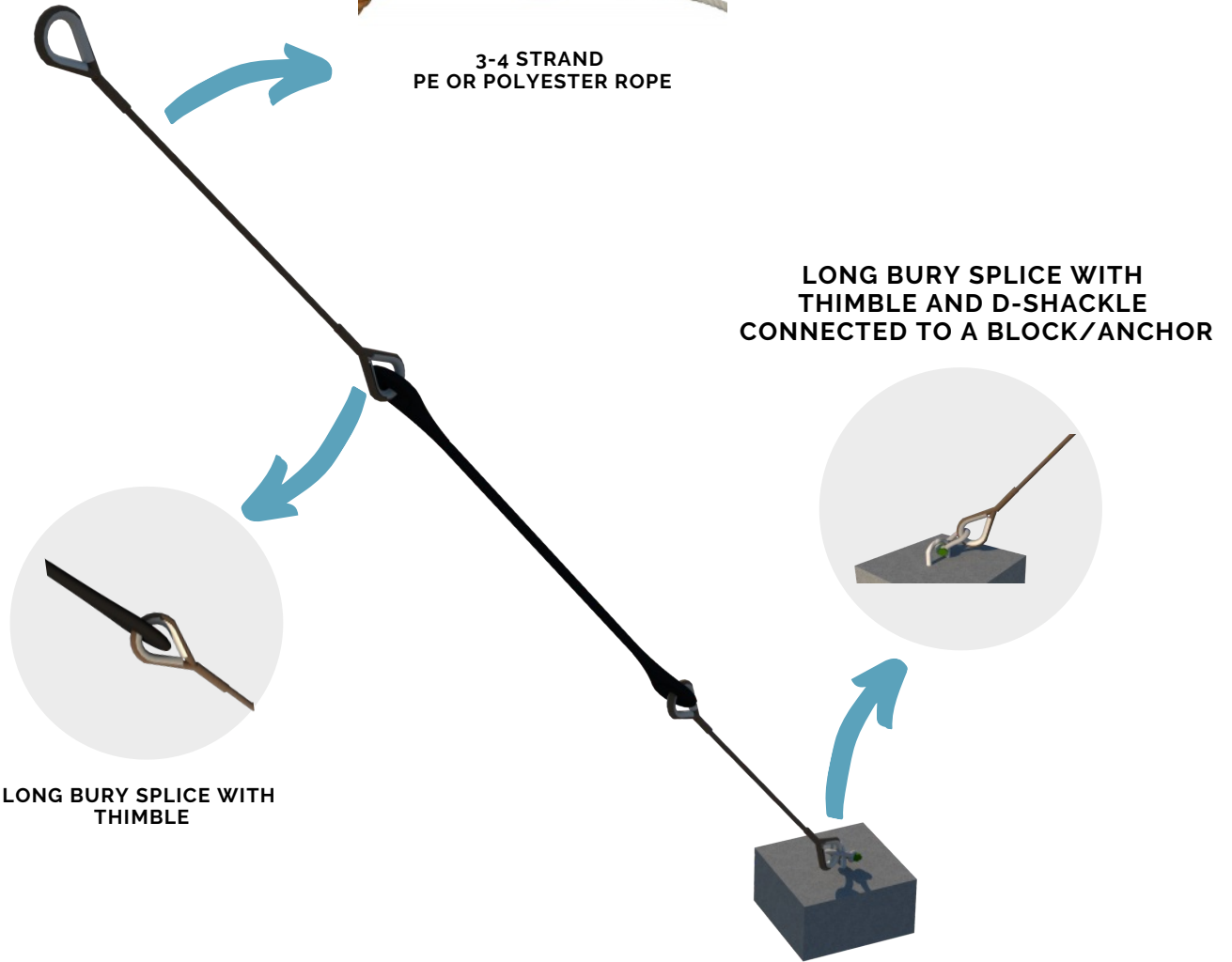
Flexline Products are highly componentized, very easily flat-packed for shipment and assembly.



COMPONENTS



3-4 STRAND
PE OR POLYESTER ROPE



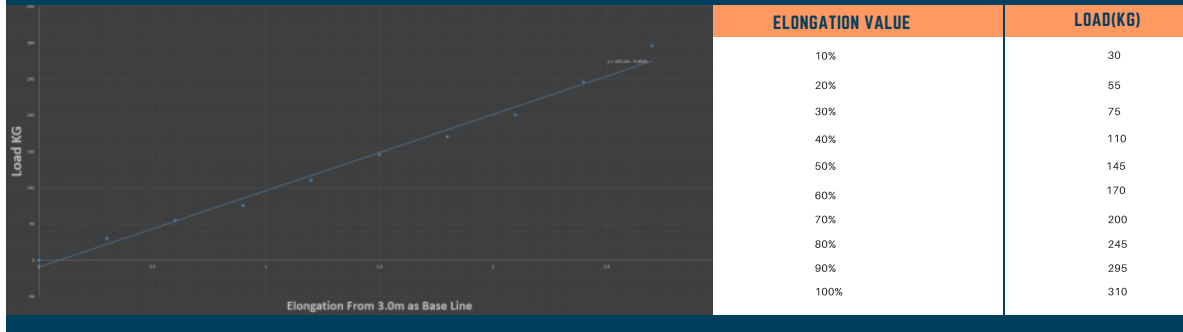
LONG BURY SPLICE WITH
THIMBLE

LONG BURY SPLICE WITH
THIMBLE AND D-SHACKLE
CONNECTED TO A BLOCK/ANCHOR

PROPERTIES



ELONGATION VS LOAD(SINGLE RODES)



Information within is believed to be accurate and reliable. However, please refer to the product data sheet for more details. The load data provided might vary by 10%.

GENERAL CHARACTERISTICS OF FLEXLINE RODS

PROPERTIES	VALUE	PROPERTIES	VALUE
Abrasion Resistance:	Excellent	Standard Length	3.00m +- 5mm
Tear Resistance:	Good	Thickness	25mm
Flame Resistance	Very Good to Excellent	Standard Color	Black
Water Resistance:	Excellent	Work Temperature	-40 to +90 Degrees Celcius
Oxidization Resistance:	Good		
Sunlight Resistance:	Good		

Information within is believed to be accurate and reliable. However, please refer to the product data sheet for more details

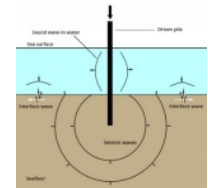
ADVANTAGES

MORE GENTLE DOCK MOTIONS

Docks and Wave Attenuators anchored with elastic rodes, are pre-tensioned at low tide which will allow the dock to have gentle movements caused by waves along with having its flexibility during bad weather.

ENVIRONMENTAL CONSERVATION

By using Flexline Mooring system, the requirement for driving massive piles to anchor marinas which some reach 10m below the seabed will be eliminated. During driving procedure, the sound created by the hammering equipment propagate to a much larger area underwater which cause the aquatic animals to change swimming direction and/or speed, dive profiles, group movements, vocalizations, and respiration rates



LOW TO ZERO MAINTENANCE

Once Flexline rodes are installed and tightened, it will settle with the environment and does not require any sort of maintenance after unlike for the case of chains and piles, regular cleaning and painting is required to achieve the design life.

